

Partners **I**n **E**ducation

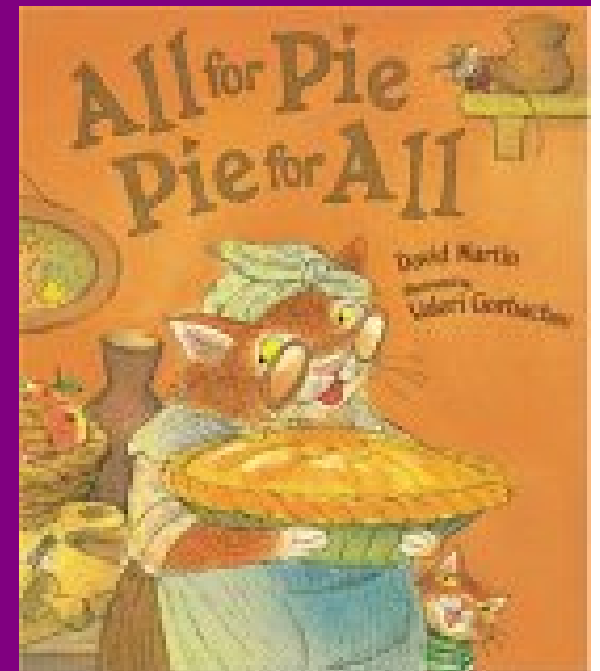


est. 1983

Warwick Valley Central School District



What is P.I.E.?



Partners In Education



*Designed to foster a partnership
among student, teacher, and parents
that helps to develop
creative problem solvers,
critical thinkers,
risk-takers,
and socially responsible,
lifelong learners.*

History

PIE was initiated by a group of parents who:

- were seeking a *bridge* between home and school
- wanted to provide educators with a valuable *support* system
- wanted a *window* into their child's learning environment
- wanted to provide a school environment that more closely resembled *real life*

Basic Components



- Multiage classrooms
- Integrated curriculum
- Parent involvement

Multiage Education

An educational practice that:

- intentionally places children who are at least a year apart in age into the same classroom
- utilizes a *differentiated, child-focused, and developmentally-appropriate* approach to designing and implementing curriculum

"Differentiated" refers to:

instruction that is adapted to the individual needs of the learners ,

. . . rather than expecting the learners to adapt themselves to the instruction

"Child-focused" refers to:

learning that emphasizes the role of children's needs, choices, and responsibilities

"Developmentally-appropriate" refers to:

a belief that individual children learn and grow at different rates and in different ways.

Multiage

- One blended curriculum spanning 2 years
- Individualized expectations
- Students' needs & interests guide scope & sequence
- Skills embedded across the curriculum
- Heterogeneous grouping of children

Double Grade

- Two grade-specific curricula running concurrently
- Grade level expectation
- Textbook drives scope & sequence
- Skills taught in isolation
- Homogeneous grouping of children

Integrated curriculum

- Diverse subjects are presented under the umbrella of one topic or theme
- Children are encouraged to seek and make connections
- Projects unify concepts and skills in a meaningful way
- NYS standards guide development of units of study

Some practices common to *PQE* classrooms

- Authentic assessment
- Cooperative learning
- Continuous progress
- Experiential learning
- Flexible grouping
- Thematic instruction
- Process learning

Parent involvement

Parents and family members participate in a variety of ways *inside and outside* of the classroom

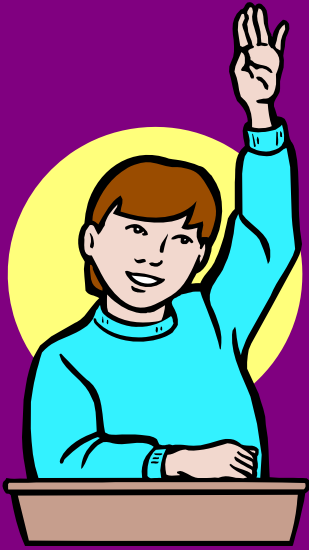
Parents may help *in the classroom* with:

- Art, cooking, craft, gardening, science projects
- Assembling books & materials
- Display of student work
- Presentations
- Reader's/Writers' Workshop
- Small group & individual support

Parents may help *outside of the classroom*

with:

- Attending PIE Community meetings
- Checking student papers
- Gathering resources for units of study
- Organizing curriculum-related outings
- Recording audio books
- Research
- Shopping for classroom supplies
- Word processing



Frequently Asked Questions

- What if I can't come into the classroom?
- How do the students transition into the Middle School?
- How do PIE students compare with single-grade students on state assessments?
- What if PIE is not offered in my neighborhood school?



Visit our classrooms



Join our PIE community